

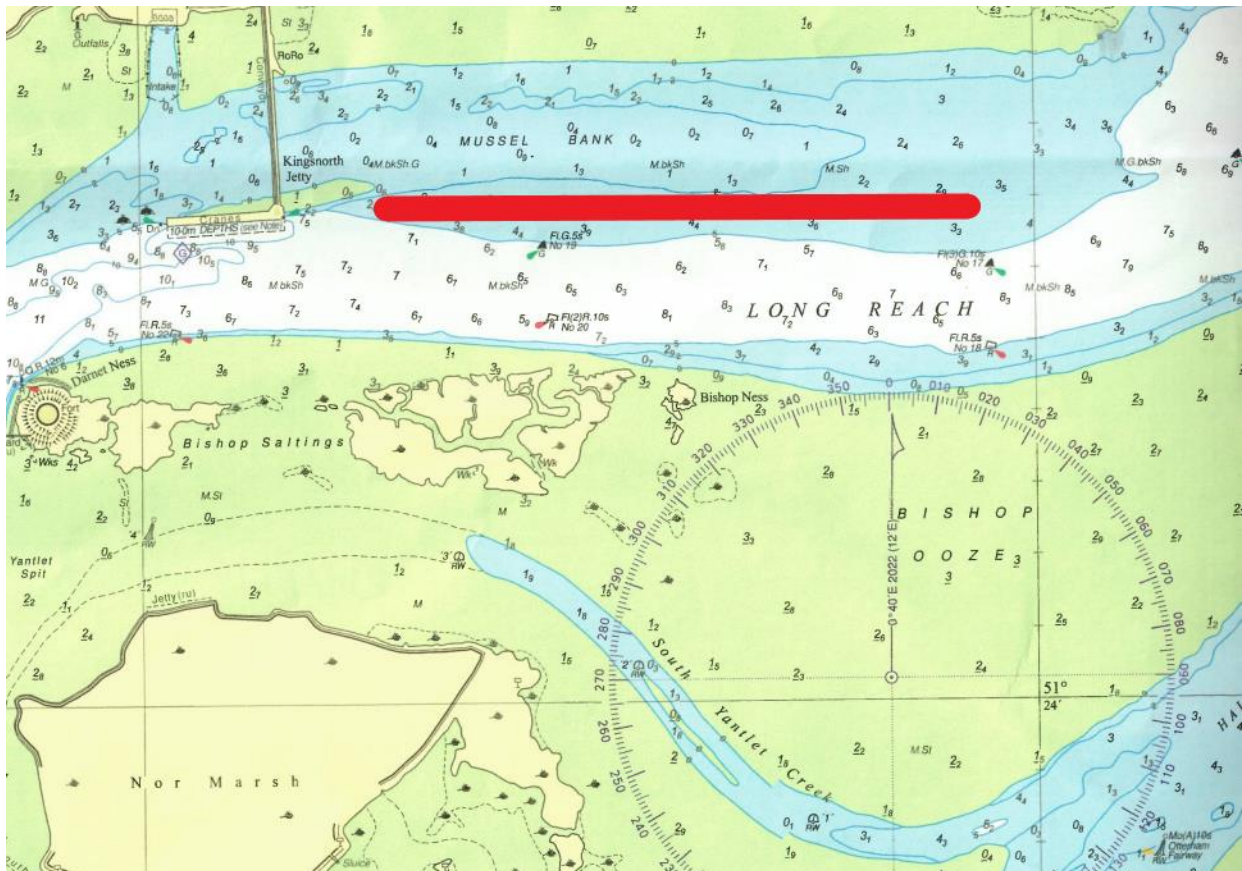
## No. 26 – 2024

### RIVER MEDWAY – LONG REACH

### MUSSEL BANK – PIPE CONSTRUCTION WORK

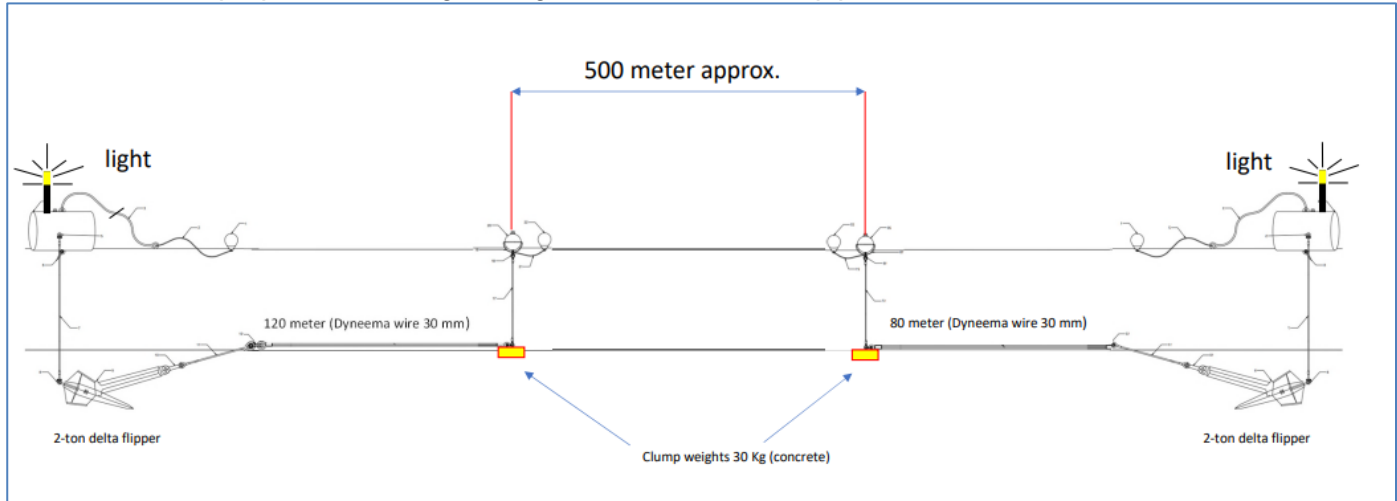
**Notice is hereby given that:** as part of a Southern Water project to upgrade its wastewater assets at Swalecliffe, a pipeline will be towed into the River Medway where it will undergo work to prepare it for installation. 2 no. 500m sections of pipe will be towed into the Medway by the tug “Bommel” which will be assisted by the multi-cat “Leon H” and an additional security craft. The pipe sections will be towed to Long Reach where they will be secured in position on the “Mussel Bank” via a system of 3 anchors and buoys. The 2 sections will undergo preparatory work before being joined together to form 1 continuous section of 1000m. When the Swalecliffe site is ready to receive the pipeline, it will be towed out of Medway and transported to the pre-dredged trench for installation.

Whilst secured on the mussel bank, the anchor system and pipe sections will be located in the approximate area highlighted in red below. The buoys attached to the anchor positions will be illuminated and the jack-up barge associated with the work will remain on location, all assets will be clear and to the north of the main navigable channel.



# NOTICE TO MARINERS

Indication of the proposed mooring arrangement to secure the pipe/s.



Work is due to commence on or around 15<sup>th</sup> May 2024 when the first barge will arrive on site.

The pipe sections are expected to be delivered on or around 18<sup>th</sup> May 2024 when they will be towed to the work site.

The work to prepare, connect and ready the pipeline for delivery to Swalecliffe is expected to take approximately 4 - 6 weeks.

**All vessels transiting Long Reach in the Medway are requested to navigate with caution, be aware of the hazard posed by the long sections of pipe which will lie between the two illuminated buoys and not attempt to navigate between the buoys. NB – The pipe sections will be on the surface of the water and may not be very conspicuous at night.**

Admiralty Chart Number 1834 refers.

Further information may be obtained from Medway VTS on VHF Channel 74, call sign "Medway VTS" or telephone 0151 949 6148 or 0151 949 6650 (Recorded Lines)

Marine Operations Department  
Peel Ports London Medway

13<sup>th</sup> May 2024